

Town and country

Mason Homes' Maple Bridge offers residents the perfect blend

CATHERINE DALEY
Special to The Sun

MASON HOMES has been bringing families home since 1961 — and Maple Bridge in Uxbridge will be a neighbourhood you'll love to call home. This spectacular location makes the most of the rolling topography of the land and takes in spectacular views of the town, as well as the natural surroundings of the area.

Mason Homes introduces a collection of fully detached homes on 50- and 56-ft. lots. Maple Bridge includes fabulous bungalows and two-storey models starting at \$279,900. A limited selection of townhomes, featuring two-car garages, is priced from \$237,900.

While geographically on the edge of country living, residents are just minutes from the centre of town and within walking distance of the community centre, stores, schools and restaurants. Uxbridge is ideally situated to take advantage of easy access to Highways 404 and 407 and the GO bus transfers commuters to downtown train connections.

Not only steeped in history, Uxbridge is known for its excep-

tional arts community — with local and professional productions, art tours and musical performances, as well as scheduled events in Elgin Park and throughout the town, on the town's arts schedule. In addition, the Heritage Railway has become a popular attraction for tourist and movie companies alike.

While geographically on the edge of country living, residents are just minutes from the centre of town.

The Westchester model is one of the largest bungalows at 1,950 sq. ft. and is priced from \$335,900. Single-level living is the ultimate in convenience, but the square footage can easily be doubled when finishing off the basement. A pleasing exterior facade incorporates high-pitched rooflines, columns and unique window treatments.

A two-car garage includes an interior door into the main floor laun-

dry room and the option for an exterior side entrance. The living and dining areas offer elegant features, including a vaulted ceiling in the living room and an optional tray ceiling in the dining room, as well as decorative columns to help define the space while maintaining an open-concept feel. Enjoy breakfast in the morning room off the kitchen and take your coffee outside to soak up the sunrise. The family room adjoins the kitchen area promoting a relaxed environment. The master bedroom features a large walk-in closet and four-piece ensuite and the third bedroom can easily be converted into a den or home office.

Exterior architectural accents complement clay-brick construction. A gas fireplace is standard in every home, as well as nine-ft. ceilings on the main level and a rough-in for a three-piece bathroom in the basement. As a special bonus offer, new home purchasers receive their choice of five appliances or the equivalent amount in upgrades.

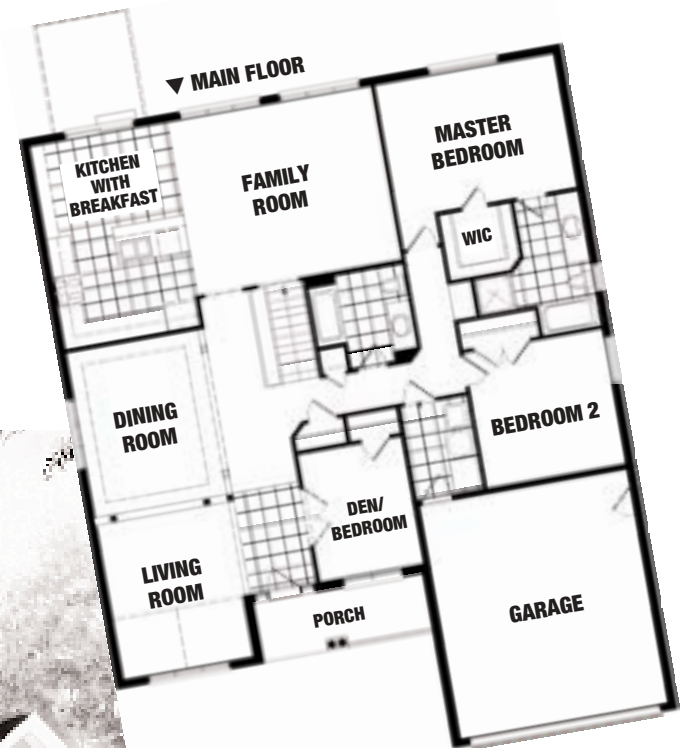
For more than four decades, the principals of Mason Homes have built a solid reputation as a respect-

ed builder by building quality homes in excellent neighbourhoods. As part of their new corporate mandate, a caring and respectful attitude is reflected in all employees at all levels.

Mason Homes was the first production-start builder to join the EnerGuide Program for New Homes in an attempt to build a more energy efficient home — and since then, the program has grown extensively. In fact, Mason Homes was presented with the prestigious Builder of the Year award in 2004.

As a recognized leader in the industry with regard to energy efficient homes, Mason Homes recently received recognition for the first ENERGY STAR qualified home in Southern Ontario. Homes are rated out of 100 and an ENERGY STAR qualification means the house received a mark of 80.

Mason Homes will be offering the ENERGY STAR qualification to interested purchasers in Uxbridge shortly. Visit Maple Bridge in Uxbridge and see why local residents cherish the rural charm of the community.



FAST FACTS

■ **LOCATION:** Uxbridge

■ **BUILDER:** Mason Homes

■ **PRICES:** Bungalows and two-storey homes on 50- and 56-ft. lots are priced from \$279,900; townhomes, featuring two-car garages, are priced from \$237,900.

■ **TO SEE FOR YOURSELF:** Visit the sales centre on Centre Street, just west of the downtown core.

■ **HOURS:** Monday to Thursday, 1 p.m. to 7 p.m.; weekends and holidays, 11 a.m. to 5 p.m.

■ **FOR INFORMATION:** Call either 905-852-7226 or 1-866-243-0159 or visit www.masonhomes.ca.