

Avonlea

The Community

Nestled within the established community of Peterborough, Avonlea blends small-town charm with big-city services. Here, you can meet friends at the neighbourhood park, walk your dog under a canopy of trees and enjoy the sunset from your front porch. It's a family-oriented place, where people know their neighbours and life seems a little easier. Avonlea abounds with parks and ponds that welcome you home to a natural community with a wide array of trees and flowers of breathtaking colours, a natural attraction for birds and butterflies. Avonlea is also within walking distance to the local shops and schools of Peterborough. With a friendly lifestyle, set in a heartwarming natural community, it's no wonder that Avonlea brings a smile to so many faces.



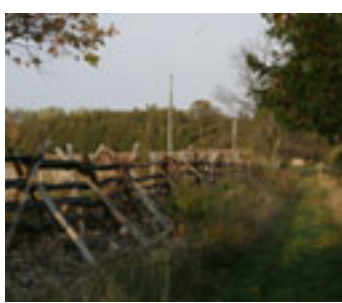
Spend some time with family at Peace Park in Avonlea



Beautiful Streetscapes with charming designs

Avonlea Architecture

Avonlea's historic architectural designs create a unique small-town feel – with relaxing porches, exquisite exterior details and family-friendly rooms. Elements from the original farmstead located on the property – such as split-rail cedar fences and low rock walls – add to the historic ambience and natural feel of the community. Three distinct architectural styles – Arts and Crafts, Victorian and Colonial – all enhance the community with breathtaking architectural details while a wide selection of striking and colourful exteriors offers a beautiful and varied streetscape for happy homeowners. The traditional community design creates a family friendly neighbourhood with elegant bungalows and two-storey homes.



Actual photos of Avonlea Woods Trail, Cedar Fence Trail, Avonlea Park and trail gates.



Enjoy the natural wonder of Avonlea



Encourage healthy living in Green for Life homes



The perfect community for families of all ages

The Peterborough Advantage

Affordable, clean and safe Peterborough provides an exceptional home for families of all ages. From its humble beginnings in 1850, Peterborough has become a thriving city known for quality of life and natural beauty. Originally a canoe-building town, Peterborough is now the hub for east-central Ontario, with a diverse economy, quality health care, recreational opportunities and an established school system with several post-secondary institutions. Located one-hour from Toronto at the gateway to the Kawarthas, it boasts annual celebrations, such as the Summer Festival of Lights, as well as lush green spaces, numerous heritage sites and a vibrant arts community. Avonlea proudly names its streets in honour of Peterborough's veterans who fought for Canada such as Logan Lane and Bowen Drive and Peace Crescent.



Avonlea Park and Pond, Cedar Fence Trail

The Green Advantage

Surrounded by parklands and natural spaces, Avonlea respects the natural features of Peterborough by preserving the existing landscape where possible and enhancing it with new greenery and Avonlea pond. In addition, Avonlea homes are built Green for Life which we believe to be more environmentally friendly, helping your family live in a happy, healthy home. High-quality ventilation will aid your indoor air quality, and standard EnergyStar® features and superior water systems will provide greater comfort while lowering your energy bills by up to 30%* with lower water consumption. With better construction comes a better quality neighbourhood for you and your family to enjoy. With all these benefits, it's easy to see why Avonlea is where you want to be – where you belong.



*Source: EnergyQuality Corp, savings versus OBC minimum built home. Mason Homes builds in a manner that promotes a more sustainable, healthier and energy efficient lifestyle but this is not a substitute for an individual's own choices, and we make no claim of future health benefits via our products nor construction methods. Green for Life and EnergyStar® qualified homes available as standard at designated communities only. E&O.E.