



Your Neighbourhood is Growing !

Hello,

It's been a busy and successful spring for Cloverlea!

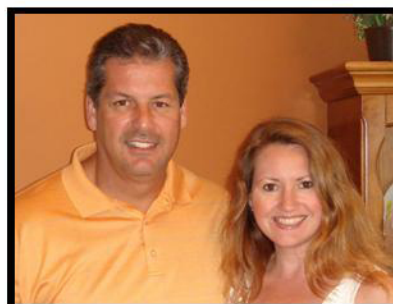
Your community continues to grow with the summer seeing many people move into their new homes. The streetscapes are evolving wonderfully, and we are pleased with all the great colors people are choosing for their homes!

As an ENERGYSTAR community, Cloverlea has the new homes with the most character in Lindsay. So bring your friends as benefit from our \$1000 Make A Friend a Neighbour Programs. We have gorgeous Townhouses and Semi-detached home from the 160's, with a wide variety of 32', 40' and 52' detached bungalows and two-storey homes.

And of course, thank you for making Cloverlea a lovely neighbourhood to be a part of!

See you soon

We would like to introduce our new Sales Agents
Brent and Allison Wettlaufer
Please drop in for a visit !



lindsay@masonhomes.ca

Mon-Fri: Noon to 7pm

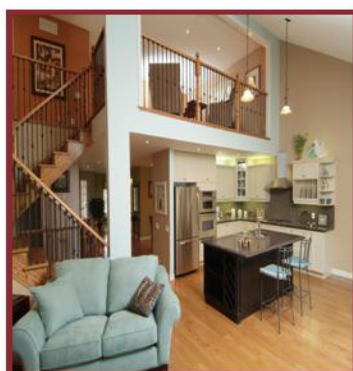
Sat, Sun, & Holidays: 11am-6pm

705-324-1653 or 1-866-443-7900



Our Models are now OPEN !

Come see the Kerr, Greenwich and Mayfair !



Come back and see us again !
Bring this flyer in and receive
\$500.00 towards upgrades
in the *Design Studio* !

Not in the market right now, please pass this on to a friend...

Limited time only,
Subject to Expiration without notice
E. and O.E. New Purchases only.

www.masonhomes.ca