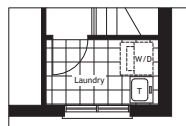
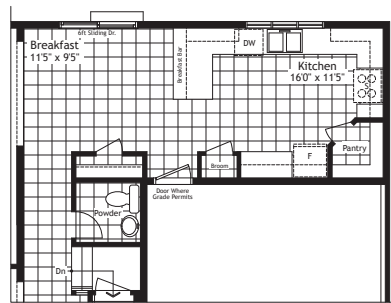
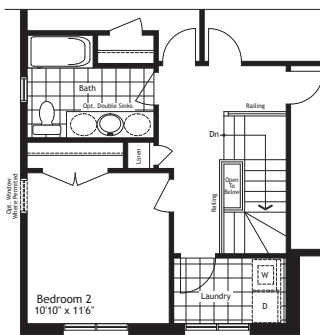
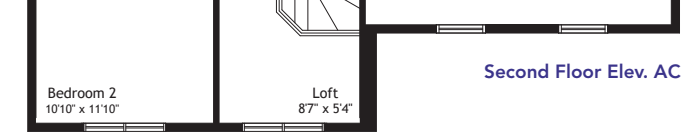
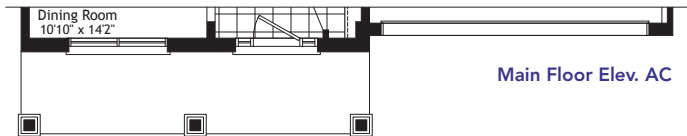
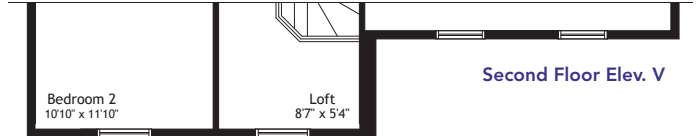
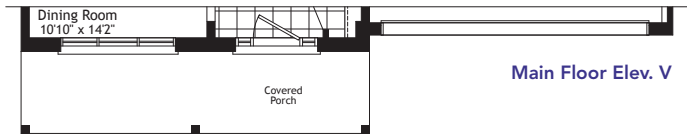
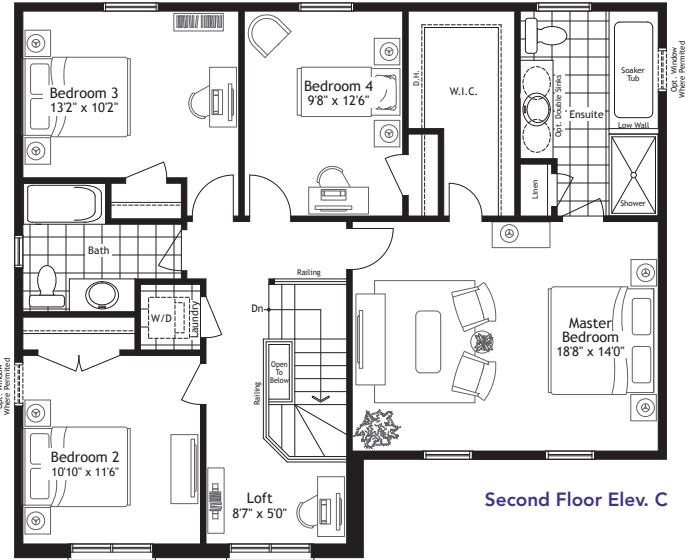
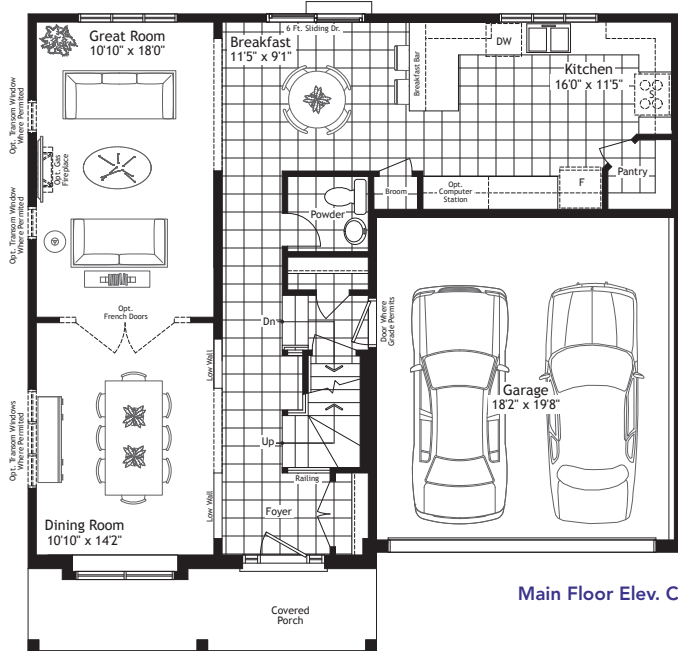
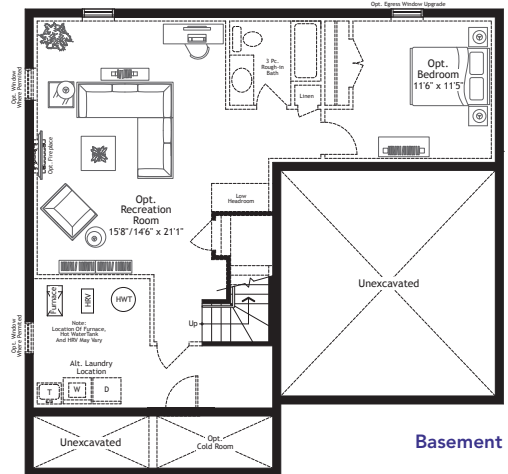


The Norland

2183 sq.ft.



Optional Finished Basement
 Approx. 714 sq.ft.
 A finished basement offers the additional space you need for such lifestyle uses as a recreation/exercise room, storage or an additional bed or bathroom. Optional cold rooms are also available in some models.



F40A2014

In an effort to develop a better product, Mason Homes reserves the right to change dimensions, elevations, specifications, materials, design and prices without notice or obligations. Window sizes and styles may vary based on elevation. These drawings may reflect some exterior upgrades. Please see your sales consultant for details. Actual usable space may vary from the stated floor area. E.&O.E.

