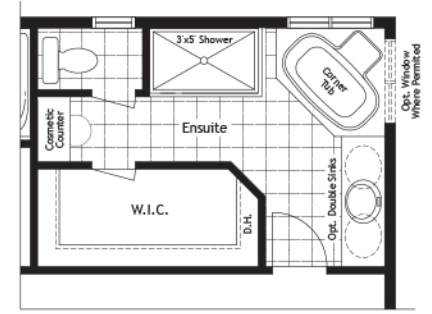
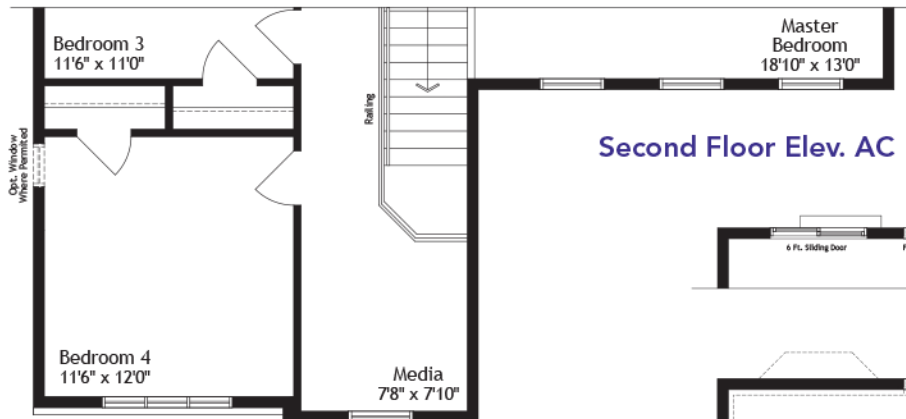
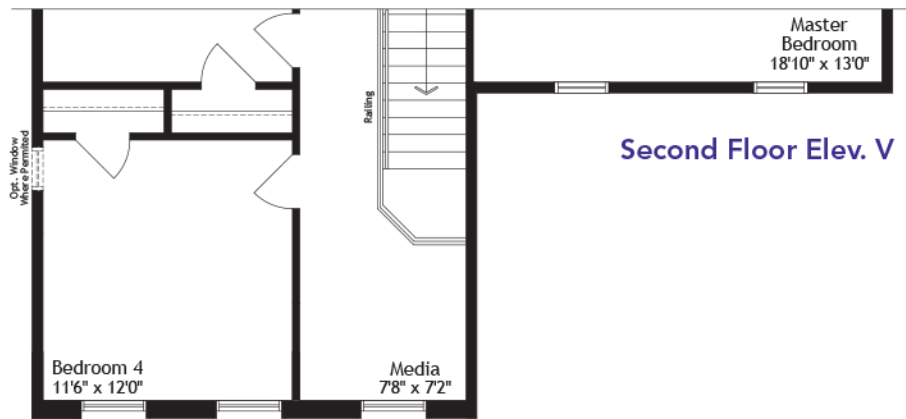
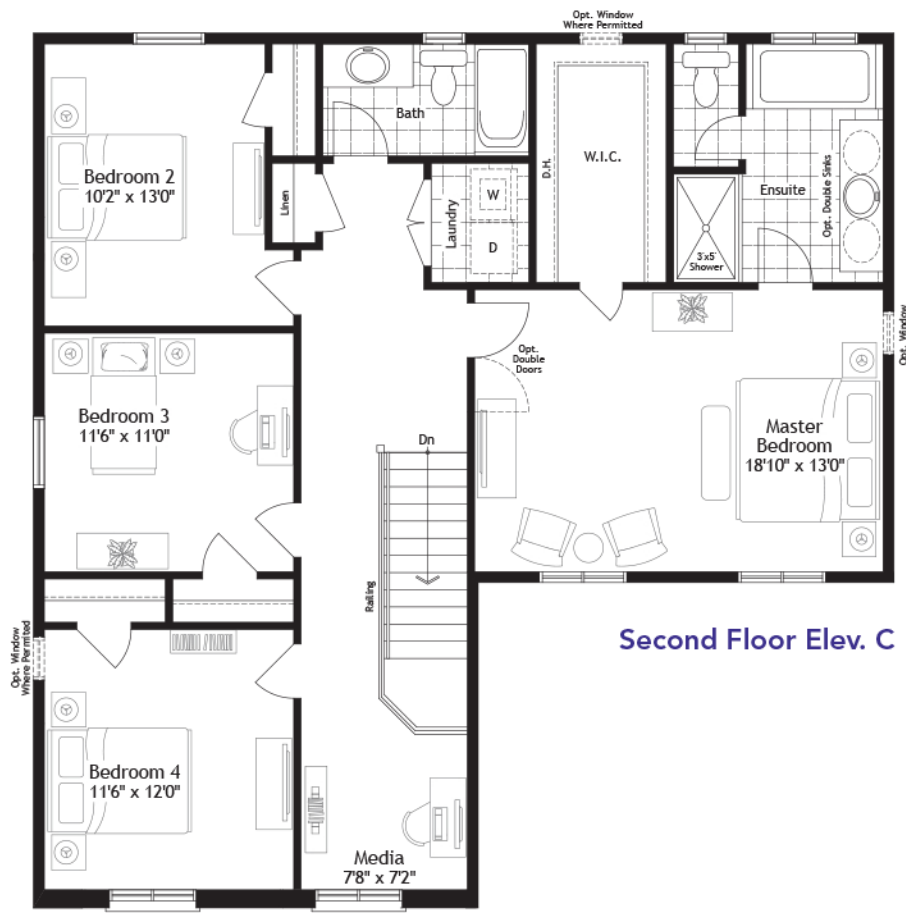
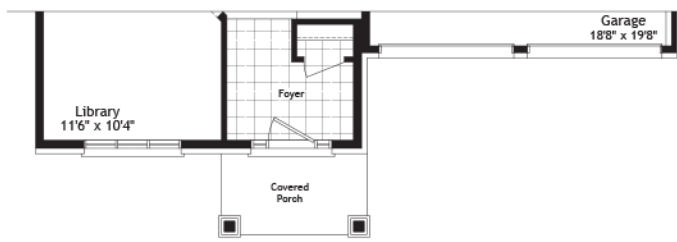
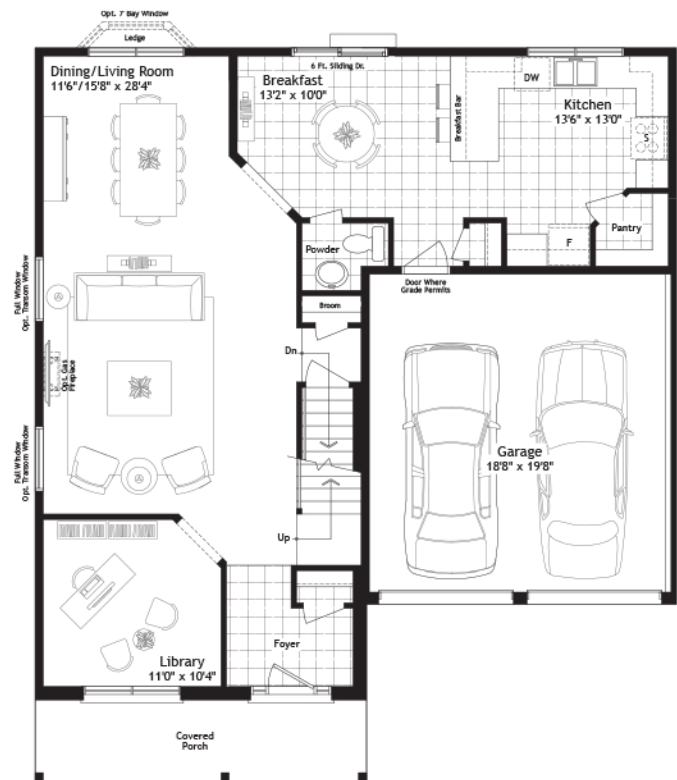
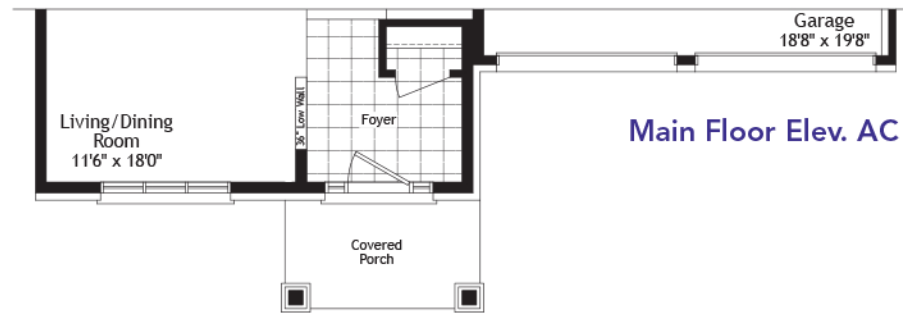
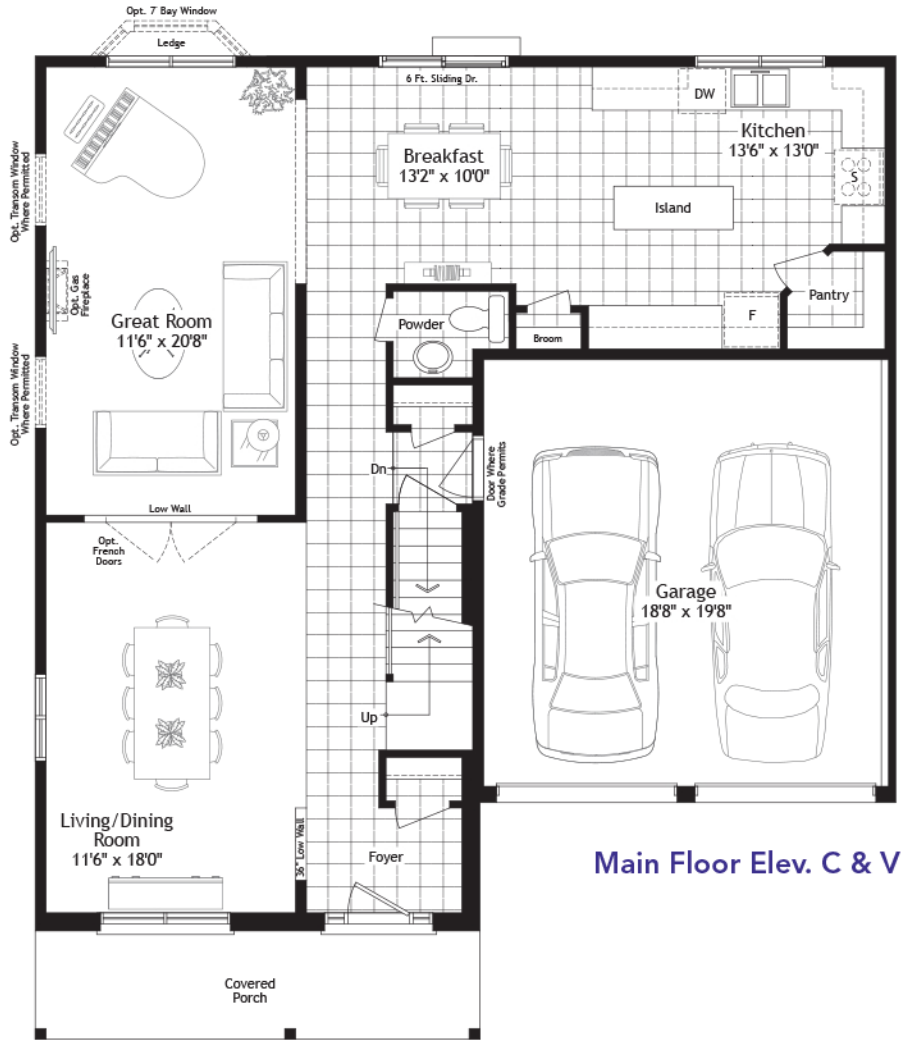
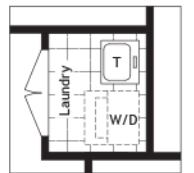


# The Fowler

## 2411 sq.ft.



Opt. Ensuite Layout

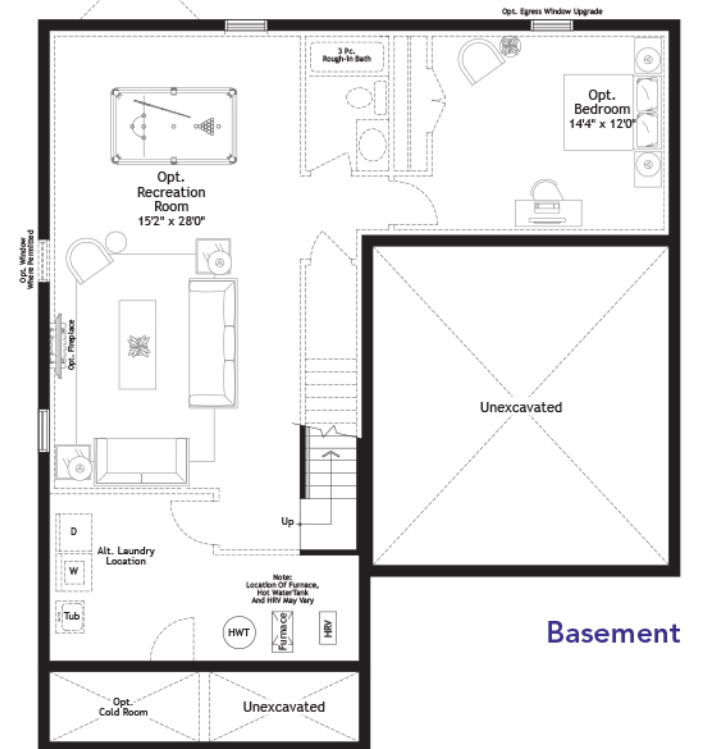


Opt. Alt. Laundry

**Optional Finished Basement**  
 Approx. 788 sq.ft.  
 A finished basement offers the additional space you need for such lifestyle uses as a recreation/exercise room, storage or an additional bed or bathroom. Optional cold rooms are also available in some models.



Walkout Basement Layout



Basement

F40E2014

In an effort to develop a better product, Mason Homes reserves the right to change dimensions, elevations, specifications, materials, design and prices without notice or obligations. Window sizes and styles may vary based on elevation. These drawings may reflect some exterior upgrades. Please see your sales consultant for details. Actual usable space may vary from the stated floor area. E.&O.E.

