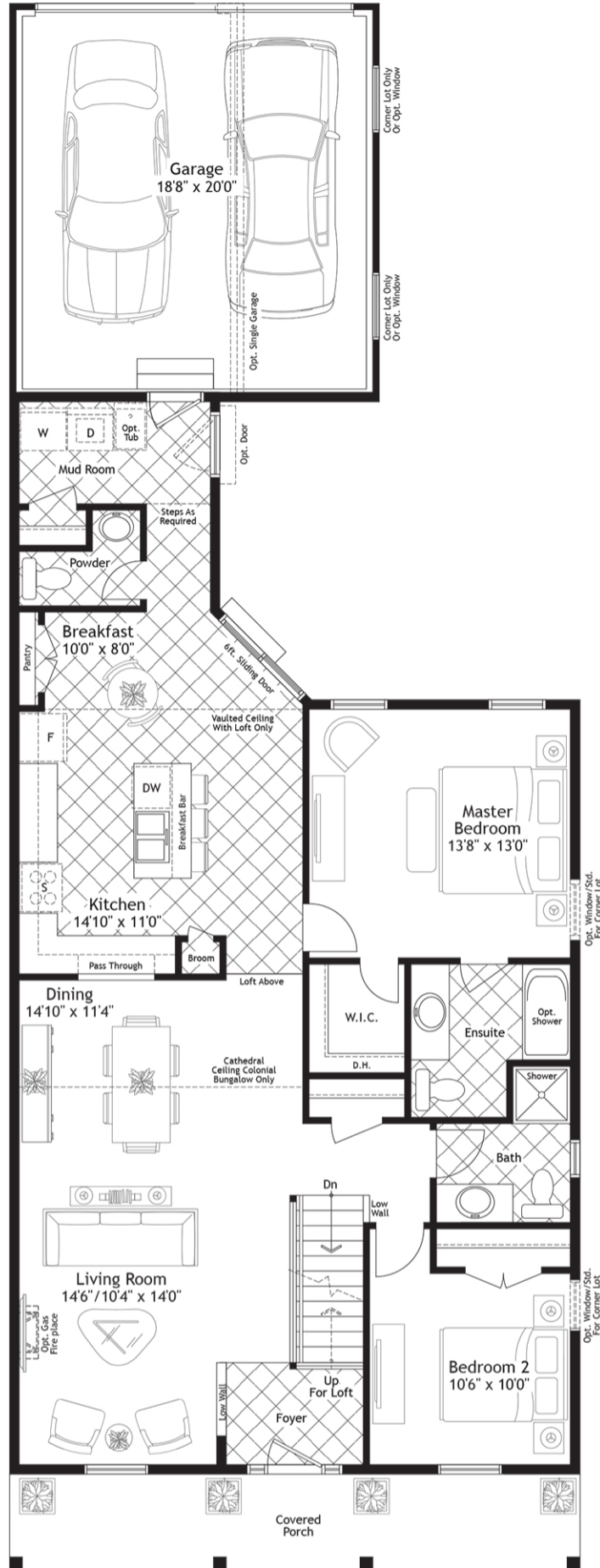
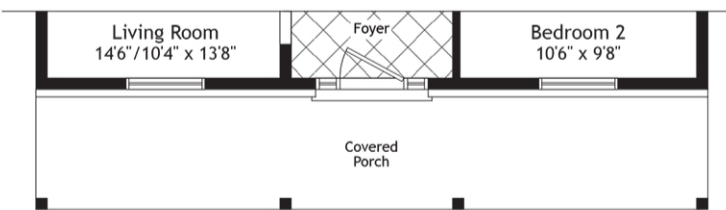


# The Oakwood

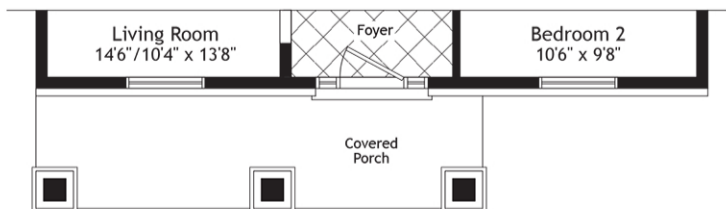
1396 sq.ft. (with Loft - Elev. C 2122 sq.ft., Elev. V & AC 2052 sq.ft.)



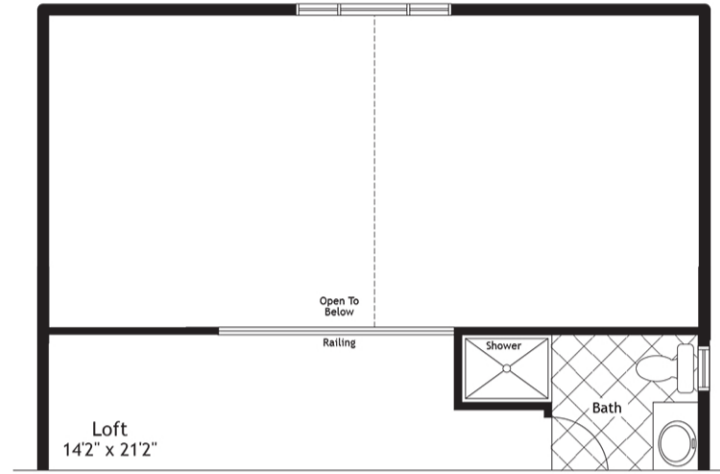
Main Floor Elev. C



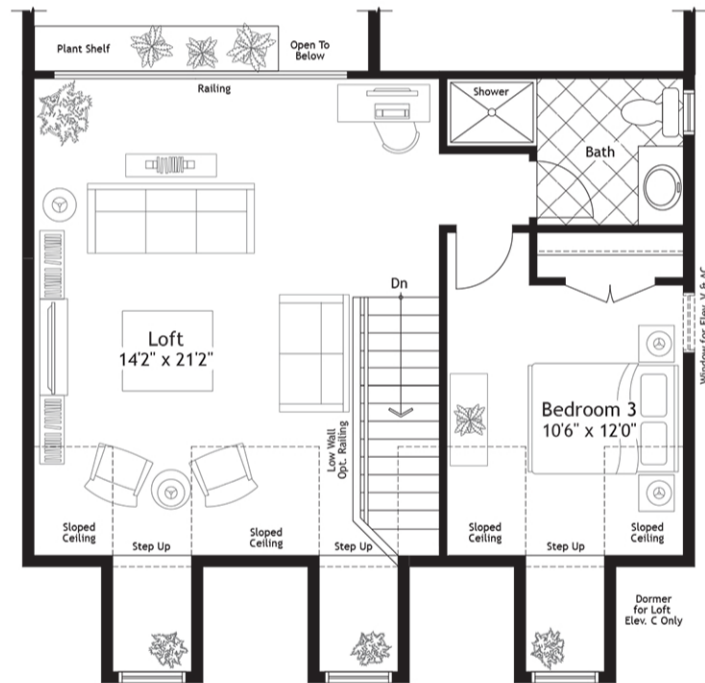
Main Floor Elev. V



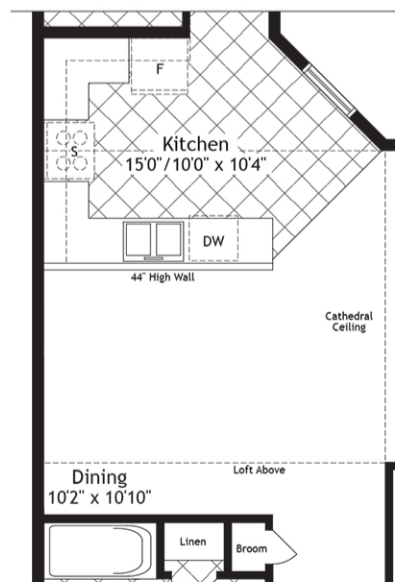
Main Floor Elev. AC



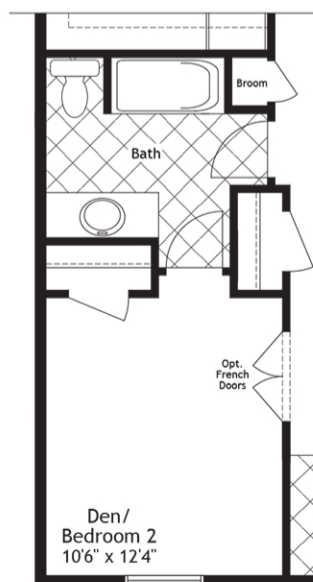
Opt. Loft Plan for Alt. Main Floor



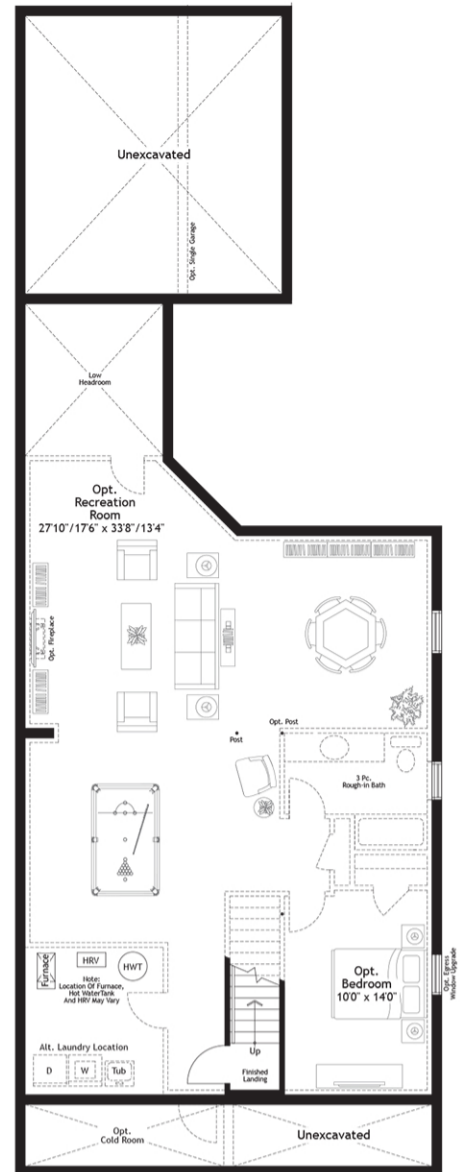
Opt. Loft Plan for Main Floor



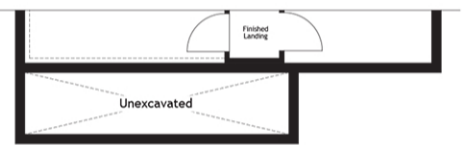
Opt. Kitchen for Alt Main Floor



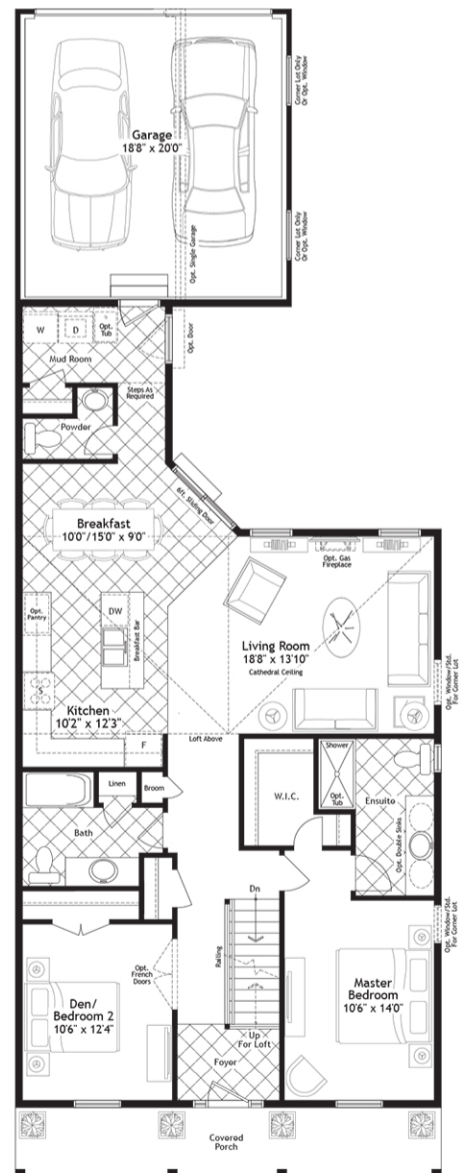
Opt. Ensuite Bedroom 2 for Alt. Main floor



Basement Elev. C & V



Basement Elev. AC



Alt Main Floor Elev. C

## Basement

Optional Finished Basement Approx. 1060 sq.ft.  
A finished basement offers the additional space you need for such lifestyle uses as a recreation/exercise room, storage or an additional bed or bathroom. Optional cold rooms are also available in some models.

R30B2014

In an effort to develop a better product, Mason Homes reserves the right to change dimensions, elevations, specifications, materials, design and prices without notice or obligations. Window sizes and styles may vary based on elevation. These drawings may reflect some exterior upgrades. Please see your sales consultant for details. Actual usable space may vary from the stated floor area. E.&O.E.

